



TOTAL SHIP & RIG MANAGEMENT

Working with Lowland



www.lowland.com



Contents

- P.03** INTRODUCTION
- P.04** OUR SERVICES
- P.06** MEMBERSHIPS AND ACCREDITATION
- P.06** HEALTH, SAFETY, ENVIRONMENT & QUALITY (HSEQ)
- P.07** CHARITY



Working with Lowland

Introduction

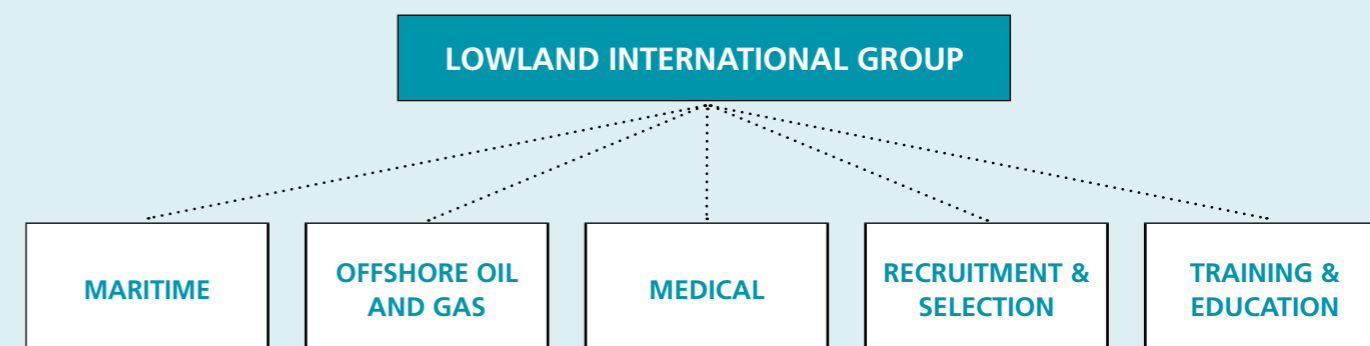
Lowland International, founded in 1993, is a privately held international shipping and offshore company with offices and operations in more than 20 different countries.

Lowland International operates vessels and offshore installations on behalf of its owners.

In 2014 Lowland International had a turnover of approximately US \$180.000.000 and encountered ZERO Lost Time Incidents.

The company is managed by M.F.L. Vanderstappen (CEO), A. Fickel (director), L.J. Kools (director) and Mrs. A. de Vries (marketing manager).

Key areas of activity





Our services

MARITIME

Our core business activity is to provide integrated crew management services to ship owners worldwide. We sail any type of ship and outfit them with complete crews of dedicated and qualified people whom we employ ourselves. We can man both ships and rigs for the maritime sector as well as provide crews for dredging or inland shipping operations.

Track record 2014: shipping 85 vessels in management worldwide.

We provide services for parties in the shipping and offshore industry involved in third-party technical ship management and ship operation. We serve a specific market for exacting clients. From our offices across 20 countries, we work to fulfill owners' high expectations globally.

Lowland International received the MLC 2006 approval. This important certification was independently tested and accredited by Lloyds. Lowland is a MLC 2006 approved ship & crew manager and adheres to the latest legislation.

OFFSHORE OIL AND GAS

For 23 years Lowland International has specialized in providing maritime crews for the offshore, oil and gas sector. We are active in the drilling and production installations, as well as on all types of offshore support vessels (including diving vessels) and on inland barges. We provide services to large multinationals as well as national oil and gas companies, independents and small operators. Our operations span the globe.

MEDICAL

One of our historical core activities, Lowland Medical Services, is specialized in medical care and Health, Safety and Environment (HSE) Services.

Lowland Medical Services provides medical facilities together with highly trained and very experienced doctors and medics for remote locations. Remote locations are offshore installations such as drilling rigs, FPSO's diving support vessels, cable lay barges but include as well the turn key provision of temporary onshore sick bays. In addition Lowland provides specialized medics to hospitals' Intensive Care units and Emergency Rooms world wide. The position of medic is often combined with that of safety coordinator. Our medics are specially trained to fill this role and can also act as HSE advisers for this reason.

Medical backup and medical support from doctors on shore is also part of Lowland International's core competencies. If legally required or if specifically requested by our clients we make experienced doctors available to support our medics on a 24/7 basis.

Lowland Medical Services can also set up complete temporary sick-bay's, fully fitted with medical equipment and relevant drugs and pharmaceutical products and is capable to provide medical assistance in remote areas.

Lowland Medical Services is specialized in establishing dedicated sick bays on newly built vessels, offshore facilities and drilling platforms in accordance with all relevant legal requirements.

RECRUITMENT & SELECTION

In those situations where our client prefers to provide permanent employment to the person or persons that will fill a specific vacancy on board of a vessel or offshore installation, then Lowland is your preferred partner for the recruitment and selection process required to identify the best candidate(s).

Lowland has a long track record of identifying and selecting the best talent for a given maritime or offshore function.

Some of our clients are:

Martinair • Walt Disney Lines • Carnival Lines • Holland America Lines.

TRAINING & EDUCATION

We believe it is an essential part of our services to ensure that our personnel has the means and opportunity advance professionally through training and career management.

By gaining experience in different companies, on different vessels or rigs and in different positions, we enable our staff to accelerate their careers. We will arrange participation in training and educational programs, both at our in-house facilities as well as externally. We perform regular professional performance assessments and discuss the results with our employees to help them reach their goals.

We support ocean shipping schools in Ukraine, Russia, Romania and Philippines and have initiated career projects in various other countries. Freshly graduated Belgian cadets sail with us as apprentices to gain experience.

Specific training services for clients:

DPO Training • Offshore Medic Training • Fire Fighting • Diving Support.



Memberships and accreditation

Lowland International NV participates in the following companies:

IMOS (International Management and Organisation Support) – Technical Services

DESC (Diagnostic Expertise & Screening Center) as back up for Lowland Medical Services and offshore medics.

Lowland Cyprus Offshore Ltd.

Lowland International Shipping Cyprus Ltd.

Artiria Shipping Company Ltd.

Genosian Ltd.

IMOS Baltic SIA

Health, Safety Environment & Quality (HSEQ)

Lowland International is a shipping company and approved marine & offshore crew management contractor. We plan and deliver integrated services in harsh and challenging environments for the maritime industry and the offshore oil and gas industry worldwide.

We are committed to a policy of achieving HSE and Quality excellence in all of our business activities and operations. Through our quality and (safety) management systems, we have established a framework for setting and reviewing HSE and Quality objectives for our company

Our HSE and Quality philosophy is based on the international standards of OHSAS 18001 for occupational health and safety, ISO 9001 for quality assurance, and STCVCA for safety. This is underpinned by commitment from the management, personal accountability, training, an approach of fairness, and performance measurement. Accordingly, we are committed to preventing injuries, damage to the environment and damage to or loss of property or equipment, and to meeting customer requirements at all times.

Everyone working at Lowland has a duty to comply with this policy and to embrace the following principles, to which directors and management are fully committed:

- Uphold HSEQ as a core Lowland business value to work towards the elimination of unsafe actions and conditions.
- Foster a positive and progressive HSE and good quality culture throughout our organisation, ensuring that all our people work responsibly to meet our HSE and quality standards whilst complying with the applicable laws, regulations and good industry practices in each country of operation.
- Provide the training and personal protection materials needed to ensure that work is carried out safely, professionally and with full consideration for environmental protection.
- Encourage customers to identify hazards and assess risks, and to actively manage operations safely, thus creating a healthy and safety working condition for our personnel as they work on their projects.
- Communicate to our people and clients that anyone who observes an action or condition that is unsafe, unhealthy or a threat to the environment has a right and duty to intervene and stop the operation, and that this intervention will be supported by management. Every event where injuries, damage to property or harm to people or the environment have or could have occurred will be investigated.
- Furthermore, we will learn from such events to prevent them recurring in the future and will operate a 'just' system of accountability when dealing with HSEQ concerns.
- It is Lowland's goal that its services will at all times meet its customers' requirements.
- Lowland believes in the concept of customer-supplier collaboration and continually striving for improvements in quality.
- Your work is never so important or urgent that you are exempted from doing it in a safe and environmentally sound manner.

If we all work in accordance with these principles, we will create a culture that values HSEQ properly and where our business performance is improved on a continual basis.



Charity

We have supported the following charities for some time:

KiKa: raises funds for the benefit of seven children's cancer centres in the Netherlands.

The Kidney Foundation: supports research into prevention, innovative treatments and a better life for kidney patients.

The Bart Foundation: helps severely sick or handicapped young people to realise their ambitions.

NuStar NuHope Golf Classic: raises funds for the homeless.

Warchild: supports children and young people affected by armed conflicts.



Netherlands Head Office

Lireweg 14-16
2153 PH Nieuw-Vennep
P.O. Box 3036
2130 KA Hoofddorp
THE NETHERLANDS
T +31(0)88 55 70 101
F +31(0)88 55 70 150
info@lowland.com

Office Rotterdam

Alkmaardermeer 9-11
3068 KL Rotterdam
THE NETHERLANDS
T +31 (0)10 28 87 612
info@lowland.com

Office Antwerp

St.-Katelijnevest 61 bus 4
B-2000 Antwerpen, BELGIUM
T +32 (0)3 22 73 185
info@lowland.be

Office Larnaca

5A, 28th Octovriou
7560 Pervolia, LARNACA
T +35 724 427 342
pavlos.michaelides@lowland.com.cy

Office St. Martin

Welfare Drive #16, unit 10
Cole Bay, ST. MARTIN
Contact: Justina Lara
T 1-721-544-3695
M 1-721-587-9922/1-721-588-2215
justina.lara@lowland.com

www.lowland.com